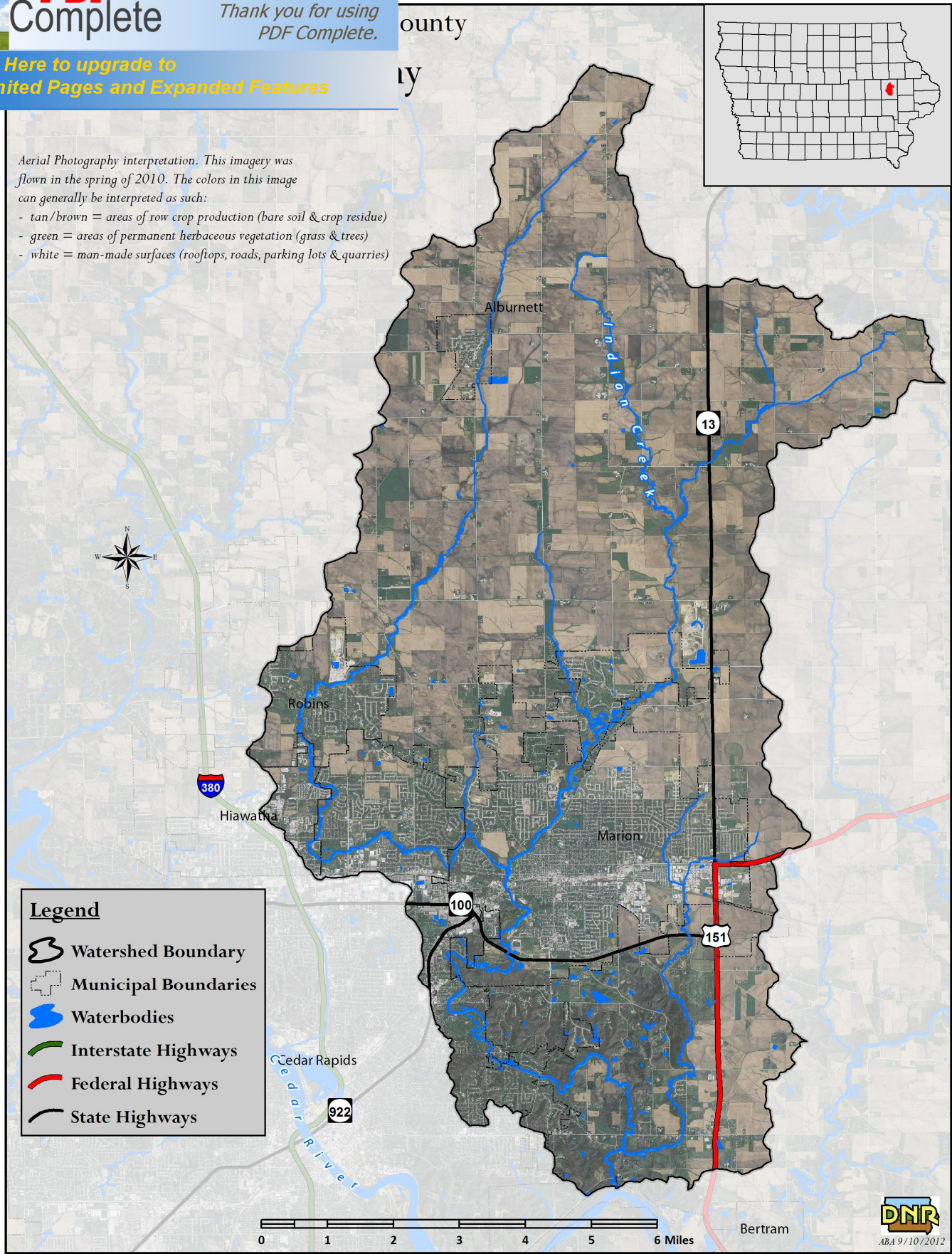


Aerial Photography interpretation. This imagery was flown in the spring of 2010. The colors in this image can generally be interpreted as such:

- tan/brown = areas of row crop production (bare soil & crop residue)
- green = areas of permanent herbaceous vegetation (grass & trees)
- white = man-made surfaces (rooftops, roads, parking lots & quarries)



The Indian Creek Watershed is the 93 square-mile area of land draining to Dry Creek, Indian Creek, Squaw Creek and ultimately the Cedar River in southeast Cedar Rapids, Iowa